

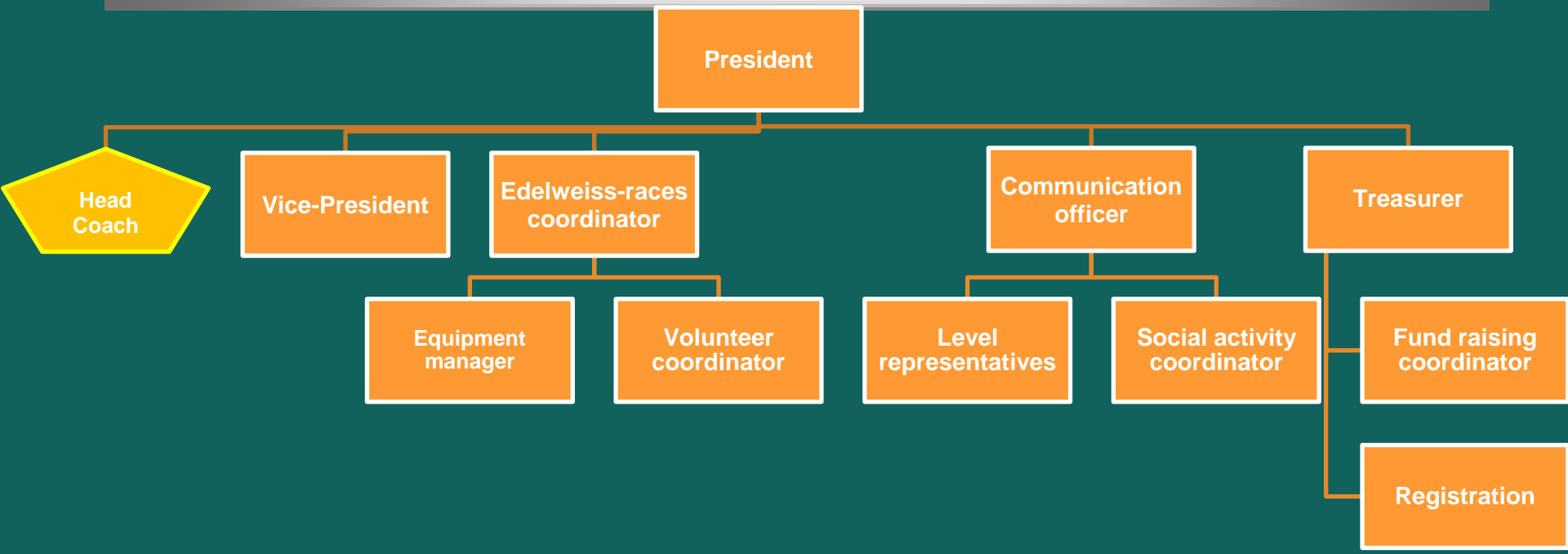
Parent meeting

Sept 2013-Agenda

- Executive team and org chart (NL)
- Fall training (NL)
- Winter training (JD)
- Race equipment (JD)
- New requirements for parents (NL)
- Communication (JD)
- Open positions (NL)
- Athlete of the month awards (NL)
- Financials & Equipment (NL)
- Renovations (JD)
- Presentation from Head-coach (JP)
- Question from parents (ALL)



Org chart



Notes:

Executive committee: President, Head Coach, Vice-President, Race coordinator, Communication officer, Treasurer

Head coach: no end of term

Other executive committee members: 3 year-term



Fall training

- **Dryland: Saturday (until Nov 16)**
- **Dryland: Wednesday (until Nov 20)**
- **Dryland testing: Sunday Sept 29 10:00-13:00**
- **Sport psychology sessions: During Saturday dryland**
- **All Hands Meeting: Tues November 5**
- **Ski trip (1): Sat Nov 23**
- **Ski trip (2)- 3 days-: Friday Nov 29, Sat Nov 30, Sunday Dec 1**



Sport Psychology: 4 sessions

- Location: Edelweiss
- Setting goals
- Self- confidence
- Motivation and focus
- Pre-comp routine and stress management
- *Dates and Topics to be confirmed*



Competitive programs- Winter 2014 - Edelweiss

- **Start Date: Saturday Dec 7**
- **Christmas Camp: Dec 23, Dec 27-Dec 30, Jan 2-3 (7 days)**
- **Night Training: Tuesday Jan 7 (10 nights)**
- **Friday Training: Friday Jan 10 (9 days)**
- **Speed Camp (U 14, U16/U18): 3 days**
- **Last day: Fun Race/BBQ: Sat March 22**



Winter – Race team fees

| Category | Age | Total |
|----------|-------|-------|
| U21 | 16+ | \$730 |
| U16 | 14-15 | \$730 |
| U14 | 12-13 | \$635 |
| U12 | 10-11 | \$445 |
| U10 | 8-9 | \$410 |
| NG | 6-12 | \$340 |

- Includes: ACA, SQA, OSZ, Audi, Races & Equipment
- Includes: Speed Camp registration for U14/U16/U18
- NG fee is for NG Comp



Racing reimbursement

- **New for 2014:**
- **Race fees will not be reimbursed in the event a racer did not attend a race due to personal reasons (i.e. was sick, was on holidays, was not able to get to the hill, etc.).**



Race equipment

- **U10 - U12:**
 - **Clothing:** Regular ski ware. No skin suits.
 - **Skis:** Slalom skis required. GS skis optional.
 - **Protective Gear:**
 - **U10 and U12:** Helmet
 - **U12:** Shin, Chin, Mouth & Hand guards



Race equipment

- **U14 - U16 - U18:**
 - **Clothing: Skin suit (for races and some training).**
 - **Skis:**
 - **Slalom, GS required.**
 - **Super G recommended for speed camp (Can rent)**
 - **Protective Gear: Helmet, Shin, Chin, Mouth & Hand guards**



Edelweiss – Hosted Races

- Edelweiss Race Team is volunteering to host 4 races
 - Preferably NG, U10, U12 and U16
 - We prefer two weekends Sat / Sun
 - MSSI prefers later in season



Parent involvement

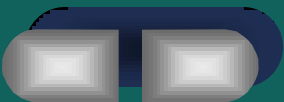
- **Fund raising- to purchase 2 video cameras and timing equipment:**
- **Each family is required to purchase 5 Christmas wreaths (or \$55)**
- **Volunteer:**
 - All families should complete level 1 training
 - All families: encouraged to complete level 2
 - All families should contribute to 4 racing activities



Communication

- **Website : Google calendar with up-to-date information on training, and a « for sale » section**
 - Level representatives to provide summary of « what happened last week »
- **Facebook: training, racing, pictures**
- **Email: last-minute information only**

- **New communication tools :**
 - White board : happening this week, do not forget next week
 - Corkboard : Pictures, For sale, etc.



Selection of volunteers

- **U10: Isabelle Roy U12: Andy Benson**
- **U14: Stéphane Barry U16/U18: Ken Rodgers**
- Inform race secretary if Edelweiss had any scratches for their upcoming race
- Provide info on “what happened last week” and race results to communication officer
- Speed camp (U14, U16/U18). Organize the lodging and meal planning for the speed camp. Register the Edelweiss kids. Confirm the parents who will stay overnight at the cottage. Follow-up on payment for each kid.
- **Equipment manager:**
 - **Cristian Marcov**

Athlete of the month awards

- Six levels (NG Saturday, NG Sunday, U10, U12, U14, U16/U18)
- Given in mid Jan, mid Feb, mid March.
- Award based on team spirit, improvement, commitment, etc.
- Coaches: to select awardees
- Published on a board in the main lodge (with picture of the athlete and his/her coach) and on a board in the race lodge



Financials

- **Current Balance: \$8,000**
- **Revenues 2012/2013: \$40,323**
- **Expenses 2012/2013: \$40,533**
 - *Expenses: Training & Race Equipment: \$11,000*



Edelweiss equipment- 2014 wish list

2 drill bits

brushes (20 red, 20 blue)

coat bags

Timy 2

2 head phones

start box/wand (Startgate Manual Gate 2 Output & Speech Amplifier FIS Approved)

timing eyes (1set) Photocell with Reflector, 2 x Fastening Console BBG and Cable 001-10

2 white boards (Quartet® Melamine Dry-Erase Board, 48" x 72", Aluminum Frame)

video recorder (option 1) Sony Full HD waterproof camcorder HDRGW66VW

package of bamboos (option 1)

package of bamboos (option 2)

coach pack sack for brushes

wireless portable timing unit

equipment bags

2 bags for stubbies

Requested renovations

- Race room: Adequate heating, hooks on walls, fresh paint, better seating, possible floor update
- Coach room: Adapt to better accommodate all coaches
- Shack at top of chairlift: Storage racks for gates. New lock.
- Finish Shack (Zoomer): Exterior walls will be finished. Lock on door
- Finish Shack (Streif): Minimal update to waterproof, insulate.



Potential improvements

- **Live Timing: Access to internet connection from Finish Shacks**
- **Radios: More cost-efficient to purchase instead of renting them**



Edelweiss – Team Gear

- **Jackets**
- **Hats, hoodies, long-sleeves, etc.**



Coaching Objectives

- **Fall**
 - Physical and Mental conditioning
- **Winter**
 - Goal Setting
 - Skiing Fundamentals
 - Drills
 - Gates
 - Race



Coaching Mentorship

- **Coach the Coach**
- **Weekly meetings**
 - goals and issues
- **Monthly written feedback to racers**



Coach Allocations

- Stephanie Johnson
- Kevin Forneris
- Matt Hebert
- Nadia Maisonneuve
- Nicolas Goulet-Monteforte
- Charlotte Barry

- *To be confirmed in December 2013*

Parent Officials

- **All new parents to take Level 1**
 - January 11 or 12, 2014
- **Get experience**
- **Level 2 Officials**
 - January 7 **AND** January 14, 2014
- **All Hands Meeting (mandatory every 2 years)**
 - November 5th, 2013– Tom Brown Arena



QUESTIONS???

